

The Enterprise Program

Multiyear, Multidisciplinary Experiential Learning



Rick Berkey
Enterprise Program Director | Professor of Practice
Associate Provost's Office for Undergraduate Education
rjberkey@mtu.edu | 906.487.4309



**Michigan
Technological
University**

1. Introduction

About Me

- Industry (1994-2006)

- Automotive, consumer products, commercial vehicle
- Engineering, program management, leadership, Six Sigma Black Belt
- Inventor (10 patents)



- Higher Education (2006-present)

- Corporate Relations
- Program Director
- Professor of Practice, Enterprise Faculty Advisor



- Education (lifelong!)

- BSME, MBA, MSME
- Certified Six Sigma Black Belt



About Michigan Tech

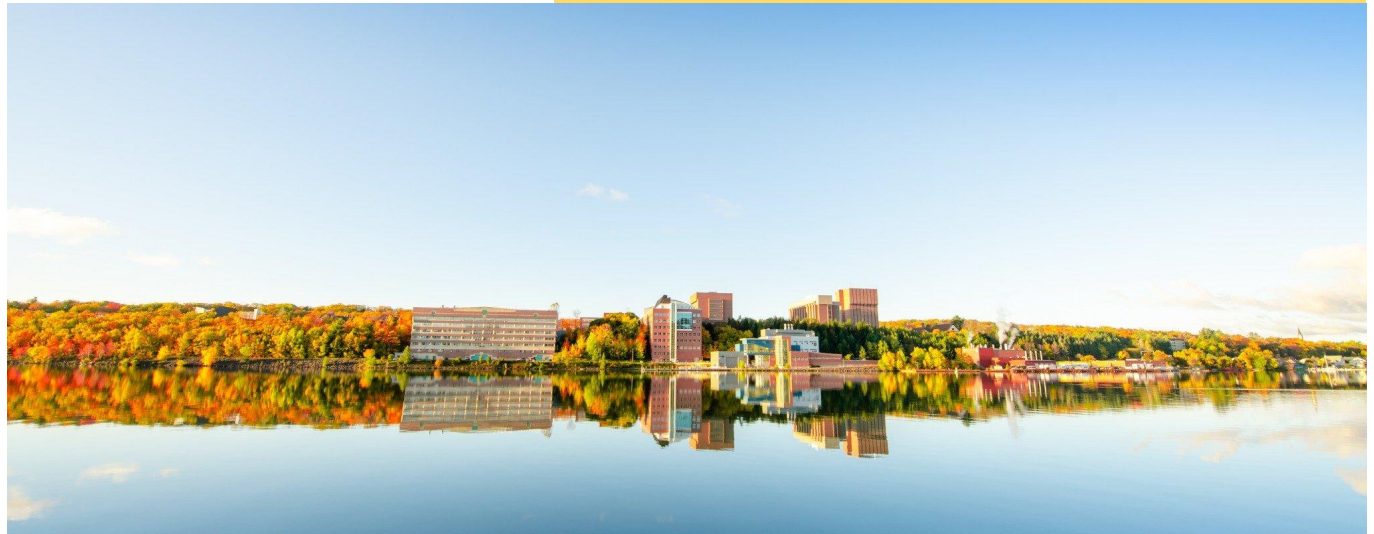


About Michigan Tech



325.6"
2021-22
Snowfall Total

- 5,778 undergraduate / 1,231 graduate
 - 59.7% Engineering
- 454 faculty / 1,085 staff
- 13:1 student to faculty ratio
- 93.8% graduate placement rate, \$65,000 median starting salary
- \$81.9 million research expenditures



The Keweenaw Snow Thermometer
(Photo by Jim DuFresne, MLive.com)

2. What is Enterprise?

Enterprise Mission

What?

Provide an innovative learning environment that fosters development of *disciplinary, professional, and entrepreneurial skills*

How?

Application of student knowledge and interests on *client-sponsored, multidisciplinary, team-based projects*

Why?

Produce career-ready graduates -- sought by employers, who create societal value

For Whom?

First-year through graduate-level students from ANY major

Enterprise is...

Experiential

Multidisciplinary teams,
multi-year participation,
hands-on projects with
open-ended solutions

Student-driven

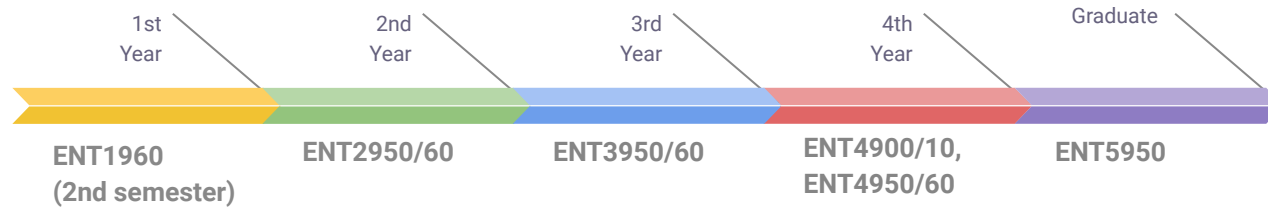
Organizations of
students in a
business-like setting,
faculty advisors coach
and guide

Industry-supported

Projects, financial
support, industry
professionals as clients
and mentors, recruiting
opportunities



Program Design



< Project work

*an "employee" of the enterprise
(1-2 credits per semester)*

Course modules >

*Personalized "employee" development
(1-2 credits each)*

Technical / Professional	Business / Innovation	Interpersonal
<ul style="list-style-type: none"> • Alternative Energy • Design for Manufacturing • Industrial Health and Safety • Lean/Six Sigma/Continuous Improvement 	<ul style="list-style-type: none"> • Global Competition • Marketing • Project Management • Ideation/Human Centered Design • Lean Start-up • Finance & Budgeting 	<ul style="list-style-type: none"> • Teaming • Communication • Strategic Leadership • Ethics • Personal Brand Management • 7 Habits of Highly Effective People

Enterprise Options

Capstone / Senior Design
Enterprise Concentration
Enterprise Minor



Enterprise Options

Capstone / Senior Design
Enterprise Concentration
Enterprise Minor



Enterprise Options

Capstone / Senior Design
Enterprise Concentration
Enterprise Minor



Enterprise Options

Capstone / Senior Design
Enterprise Concentration
Enterprise Minor



A “typical” enterprise...

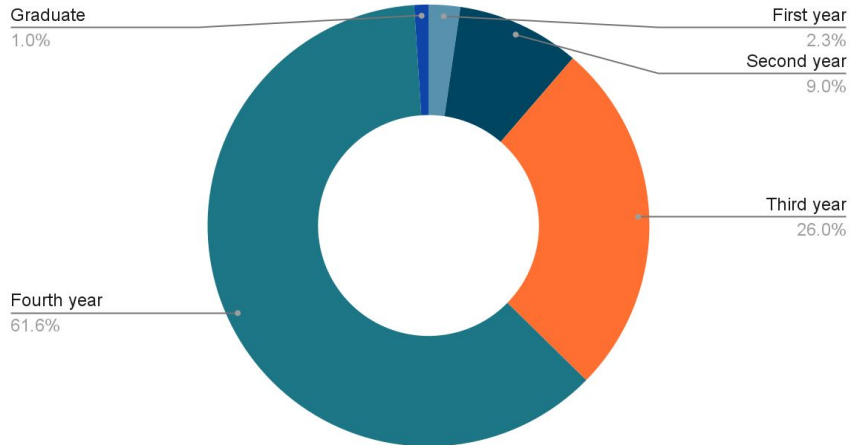
(is anything but typical!)

35
students

5
unique
majors

22%
women

Enrollment by Class: 2020-21



Each enterprise is a permanent organization that works with internal and external stakeholders to:

- Discover, develop, and evaluate solutions to meet client needs
- Manage multiple projects, schedules, and budgets
- Recruit, develop, and retain members



<https://www.mtu.edu/enterprise/involved/expo/2022/enterprise/>

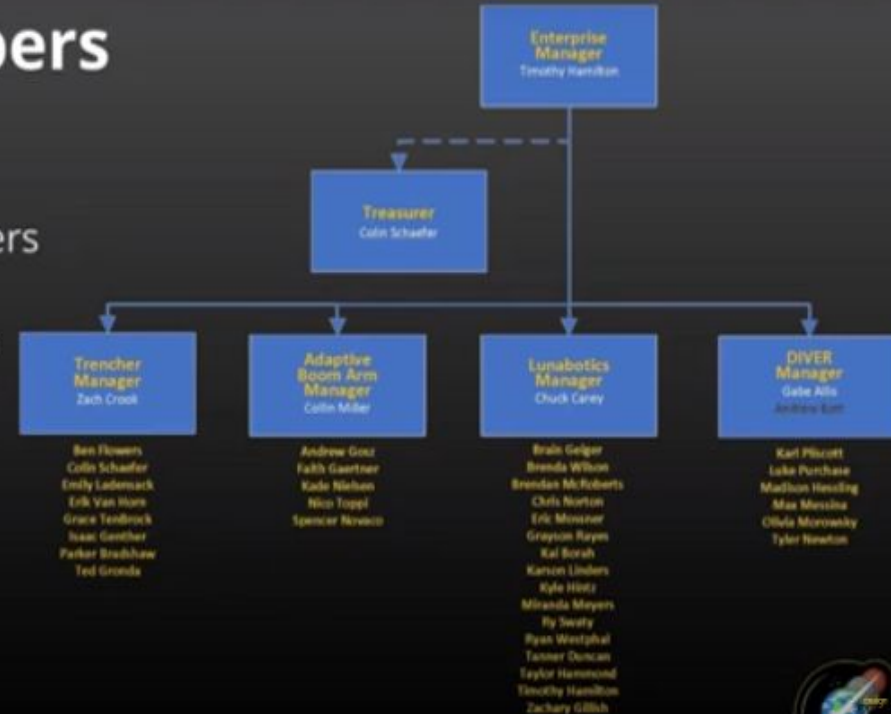
The **Multiplanetary INnovation Enterprise (MINE)** seeks to design, test, and implement robotic technologies for extracting and using local resources, construction, and characterization in extreme environments. These environments currently include Lunar, Martian and flooded subterranean environments on Earth.

MINE works in multidisciplinary groups to develop technology to perform tasks in extreme environments on Earth and on other planets. We participate in NASA's lunabotics competition, build and test robotic vehicles and technologies directly related to state of the art research for a variety of customers (Government, Commercial, Internal).

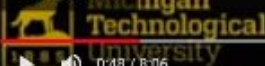
Current Members

41 Members

- 28 Mechanical Engineers
- 5 Computer Science
- 3 Computer Engineers
- 3 Electrical Engineers
- 2 Robotics Engineers



MORE VIDEOS



0:13 / 8:06

Environment & Sustainability



Built World



Hotforest



Green Campus

Materials & Manufacturing



Advanced Metalworks



Consumer Product Manufacturing



BoardSport Technologies



General & Expedition Adventure Research

Transportation & Mobility



Aerospace



Supermileage Systems



Blizzard Baja



Clean Snowmobile Challenge



Formula SAE



Velovations

Communications



Cin/Optic Media



Wireless Communication

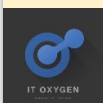
Software, Electronics, & Robotics



Blue Marble Security



Husky Game Development



ITOxygen



Robotic Systems



Strategic Education through Naval Systems Experiences (SENSE)

Human Health & Interface



Innovative Global Solutions



Humane Interface Design



H-STEM Enterprise (new Fall 2021!)

Technology



Alternative Energy Enterprise



Multiplanetary INnovation Enterprise (MINE)

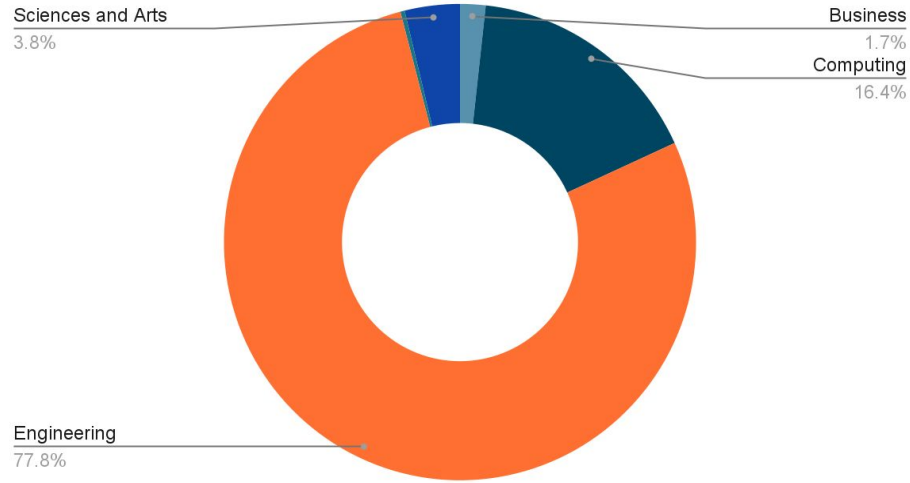


Open Source Hardware

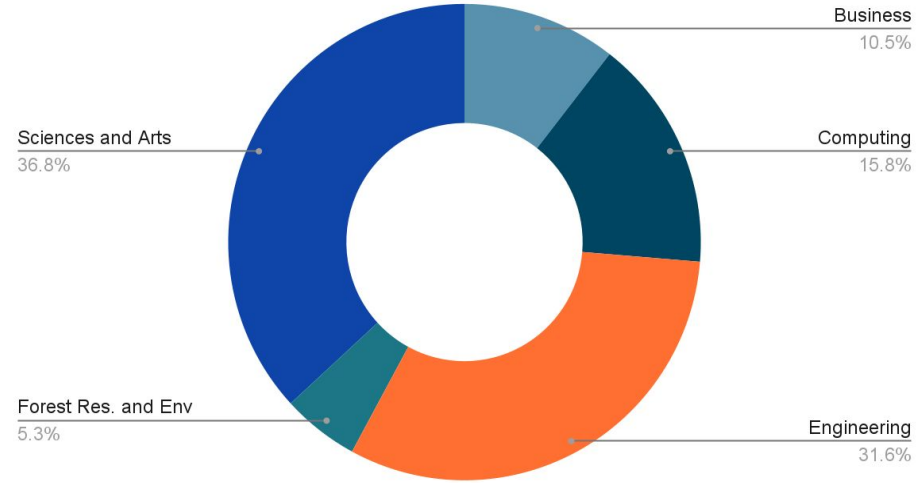
26 enterprises, 900 students, 35+ majors!

Multidisciplinary Reach

Enrollment by College: Fall 2021



Majors by College: Fall 2021



[Some of] our program partners



Student Benefits

- **Apply** - education to industry-relevant projects
- **Develop** - professional, interpersonal, and leadership skills through multi-year project experiences
- **Network and Collaborate**- with industry professionals, multidisciplinary teams
- **Cultivate & Affirm** - curiosity and career interests



Program Sponsor/Partner Benefits



- **Mentor & Engage** - with tomorrow's leaders and professionals
- **Market & Promote** - your organization to the campus community
- **Access** - students, faculty, and University resources
- **Partner** - with Michigan Tech to infuse experiential learning with industry-relevant application

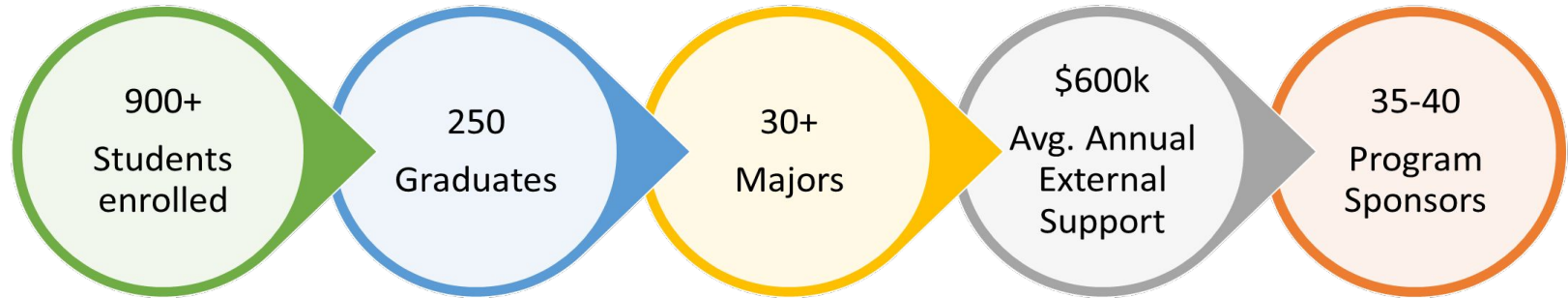
Faculty Advisor/Mentor Benefits

- **Engage** - with students in student-led, discovery-based learning
- **Develop & Strengthen** - teaching, mentoring skills
- **Network & Collaborate**- with industry to build broader relationships
- **Identify & Recruit** - potential students for your research programs



Program Impact

Annual >>>



<<< Lifetime



A close-up shot of a car's side-view mirror. The mirror's reflection shows a winding asphalt road through a lush, mountainous landscape. The road is flanked by tall evergreen trees and a valley filled with more greenery. In the distance, a large, rocky mountain peak rises against a clear sky. The mirror's frame is visible, and the background outside the mirror is a blurred view of dense green trees.

2. How Did We Get Here?

Program Timeline

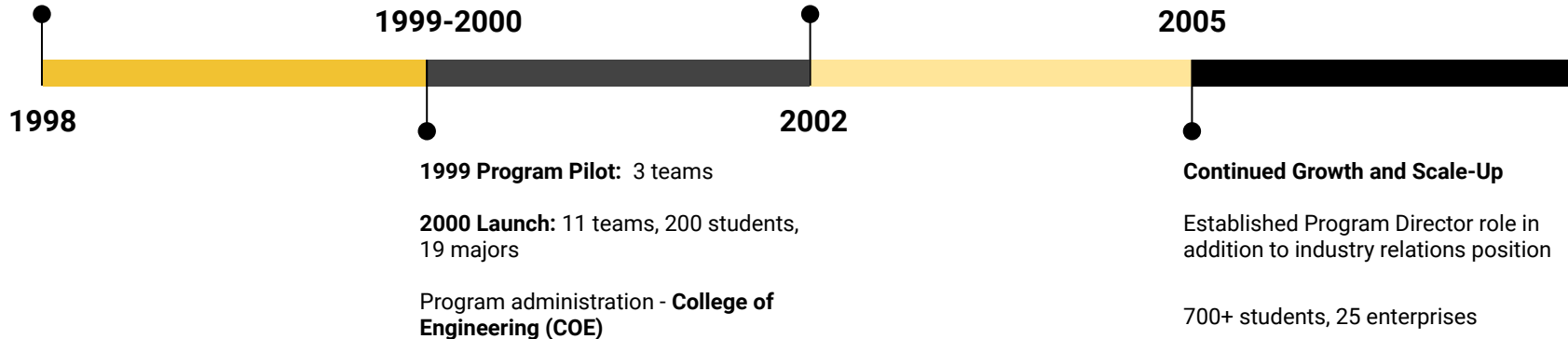
NSF Award #9872533: \$749,976

Redesigning Engineering Education with Active Learning and Integration Through the Engineering Enterprise (REALITEE)

M. Plichta, C. Anderson, B. Joyce, B. Barna, S. Sorby

NSF Grant Concludes

Industry sponsorship model in place, dedicated Industry Projects Coordinator

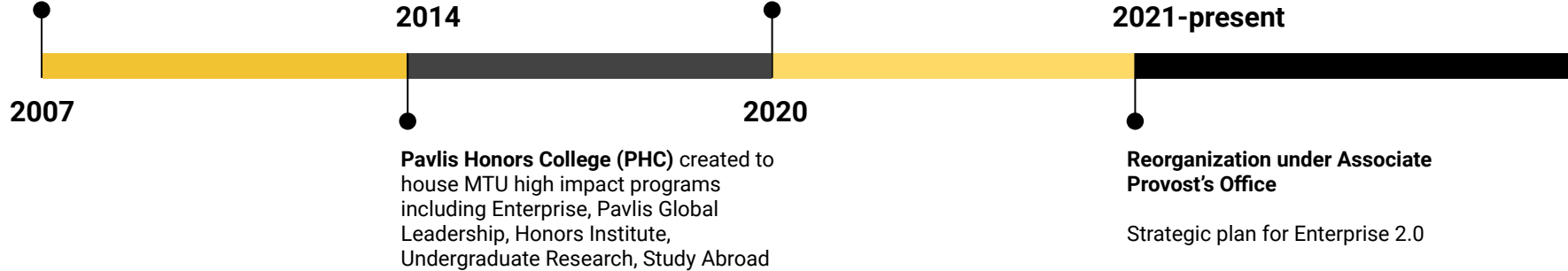


Program Timeline (cont.)

Interdisciplinary Initiative

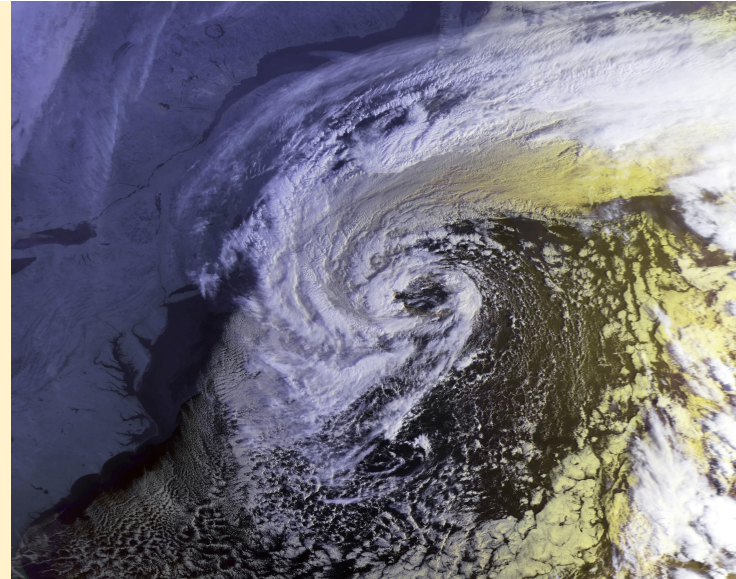
Program moved out of COE into newly formed Institute for Leadership and Innovation (ILI)

Matrixed reporting into Vice President for Research and Provost



The “Perfect Storm”

- NSF Support
- Industry Need
- Engineering, Business, Humanities Collaboration
- ABET EC 2000
- Academic Calendar Changes



A Good Starting Point



- Engaged faculty with ideas!
- Competition teams
- Support of engineering depts.

Choice & Flexibility...

fosters motivation, engagement, and value creation

- Students -
- Sponsors -
- Faculty -



Organizational Enablers



- Dedicated industry liaison / fundraising role
- Internal governing board
- Small, high-STEM university
- Industry network



3. Where Next?

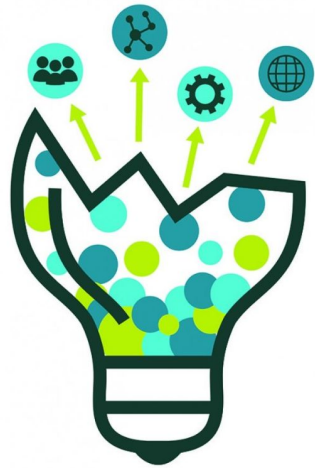


First-year focus

- Earlier student involvement
- Exploration of interests
- University retention!



Beyond Capstone: “Next-Gen Gen-Ed”



IDEA hub
Innovate | Design | Engage | Act

- “Essential Education”
- Pathway, capstone experiences for ALL majors
- Enterprise satisfying Gen-Ed learning outcomes

Operational Refinements and Standards

- Faculty recognition/credit
- Project/program software
- Revisit the funding model
- Coordinate external engagement



Questions



A green rectangular sign with rounded corners and a white border, mounted on a metal post. The sign features the text "Thank You" in a white, sans-serif font. The background of the sign is a textured green. The sign is set against a bright blue sky with scattered white clouds.

Thank You

mtu.edu/enterprise



**Michigan
Technological
University**